

26 March, 2008

From: Scott P. Chapman
Radiant Technologies, Inc.
To: Precision LC Owners

Subj: Vision 4.1.0 Update of Precision LC Testers Shipped Before 2005

Dear Precision LC Tester Owner,

Thank you for updating your Precision LC Tester Vision software to Version 4.1.0. Once you have installed Vision 4.1.0, you may find that the software does not locate the Precision LC tester. This is evident on software startup when the initial dialog indicates that no hardware is found (**Figure 1**). Note that this situation should only apply to users that are running Vision 3.1.0 or older. If you are running Vision 3.2.0, this procedure should not be required.

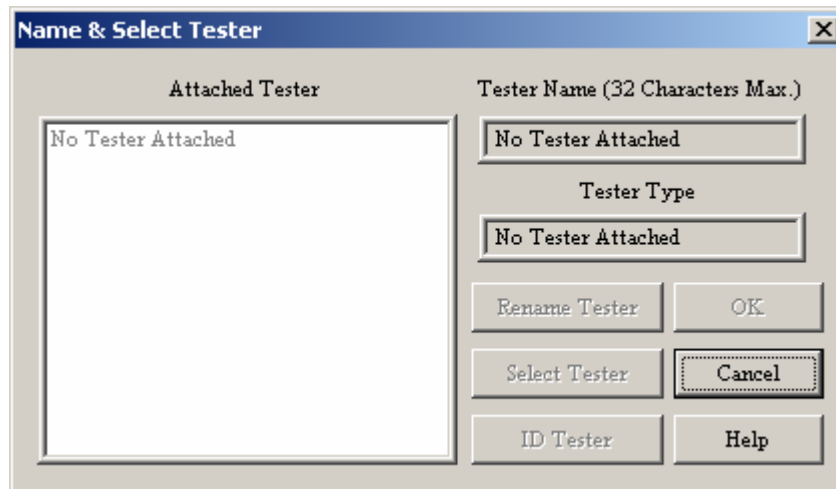


Figure 1 – Hardware Identifying Dialog.

Please follow these steps to update the tester to the correct driver:

1. With the Precision LC turned on, select the “My Computer” icon on the desktop, right-click and select “Manage” from the popup menu (**Figure 2**). Note that the figures in this document were taken from Windows 2000. The procedure is the same for Windows XP and Vista.

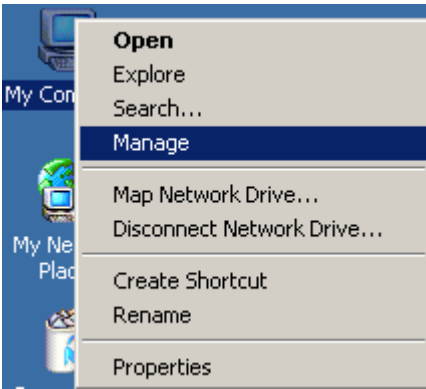


Figure 2 – Start to Locate the Driver.

2. In the dialog that appears, select the Device Manager under “System Tools” and open the “DeVaSys USB Interfaces” folder in the right window pane. Select “USB-I2C/IO”, Right-click and select “Properties” from the popup menu.

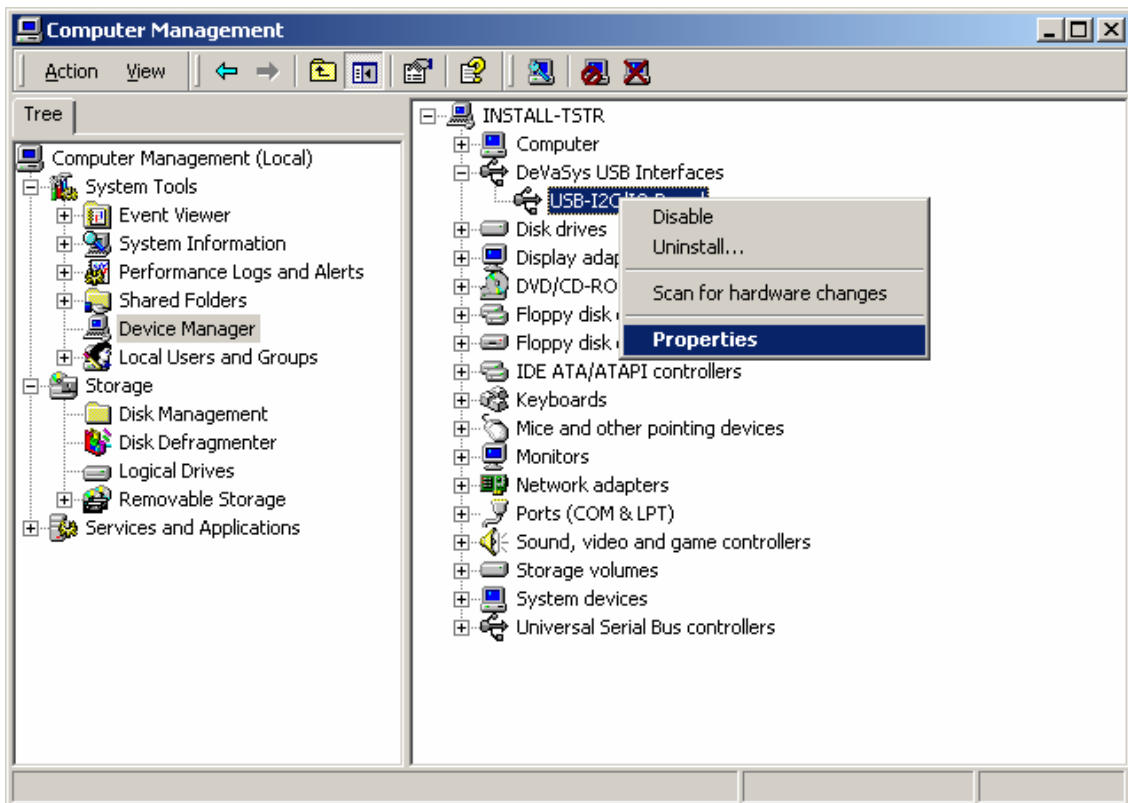


Figure 3 – Select the “DeVaSys USB Interfaces” Driver in the Device Manager.

3. In the dialog that appears, select the “Driver” tab, then click *Update Driver...*

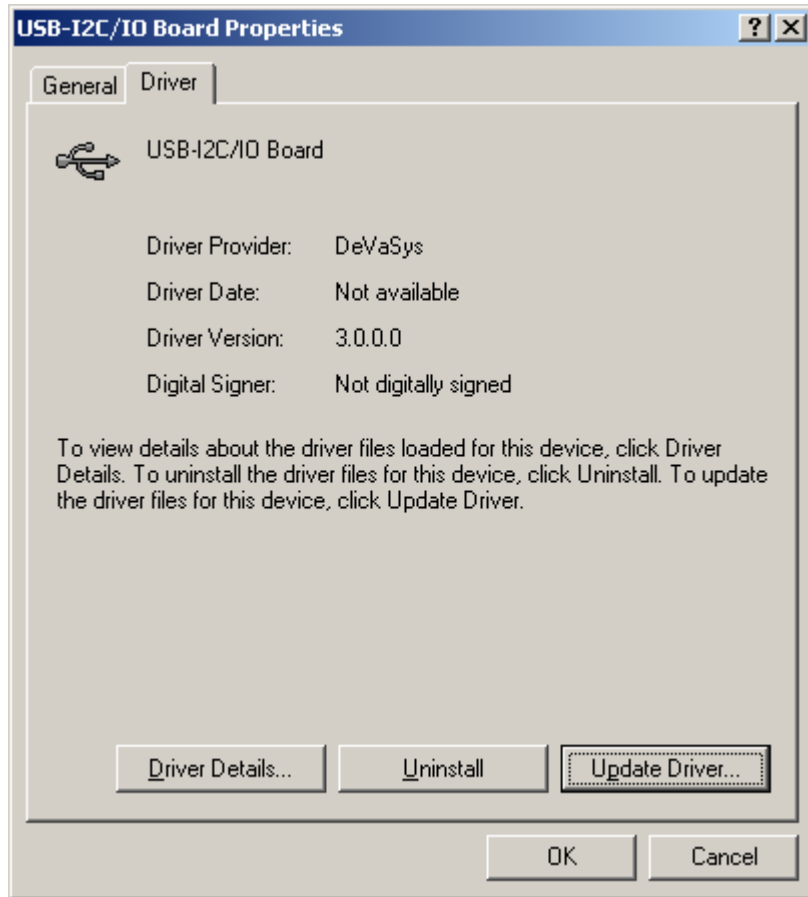


Figure 4 – Start the Update Driver Wizard.

4. The driver update wizard starts. Click Next > on the first page.



Figure 5 – Driver Update Wizard Page 1.

5. On the second wizard panel, ensure *Search for a suitable driver for my device...* is selected, then click Next >.



Figure 6 – Driver Update Wizard Page 2.

6. On the third wizard panel, ensure that Specify a location is checked and all other options are unchecked, then click Next>.

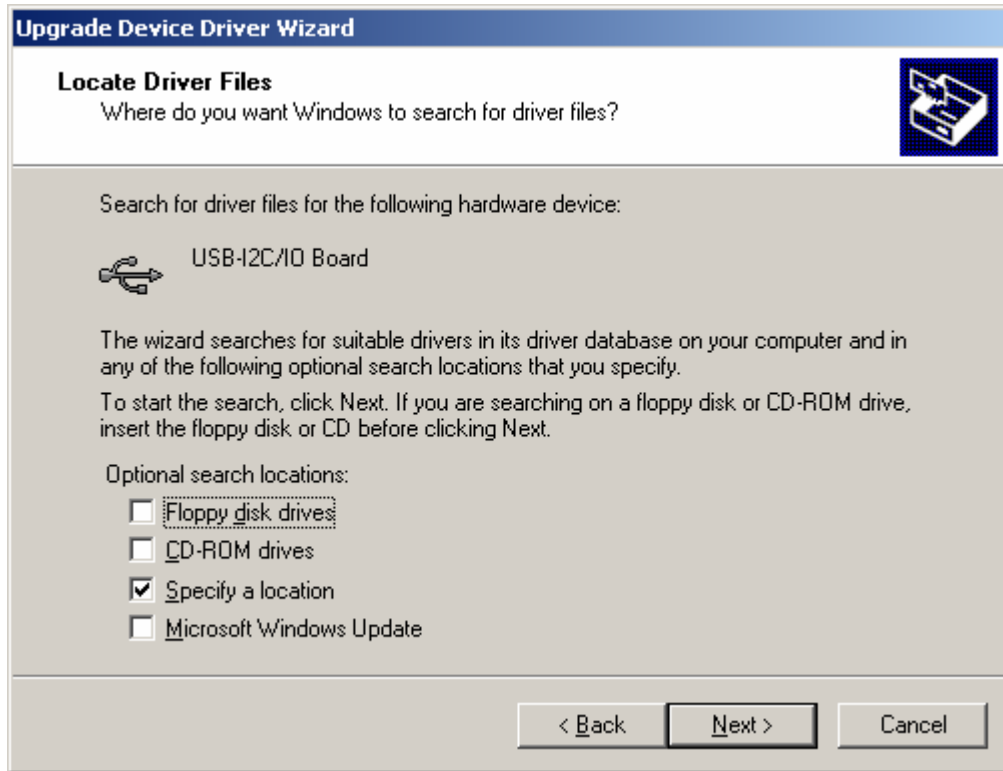


Figure 7 – Driver Update Wizard Page 3.

7. In the dialog that appears, click *Browse...*, navigate to C:\RT_USB, select NGS.inf, then click *Open*.

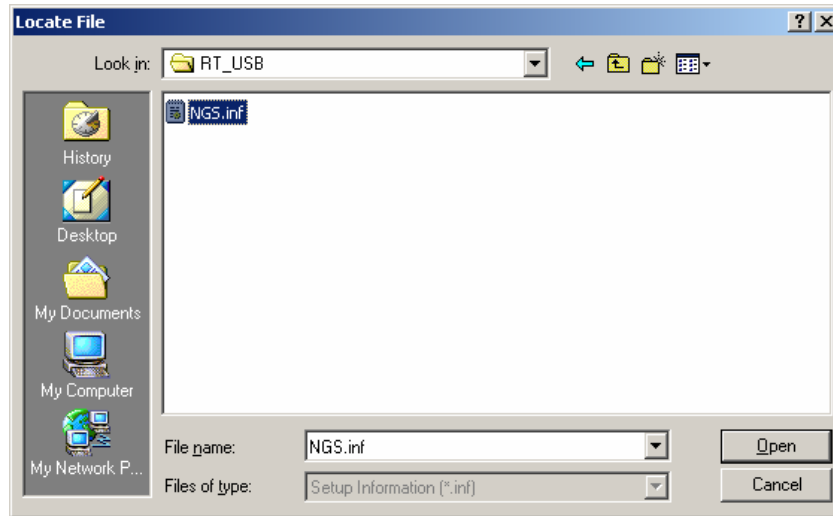
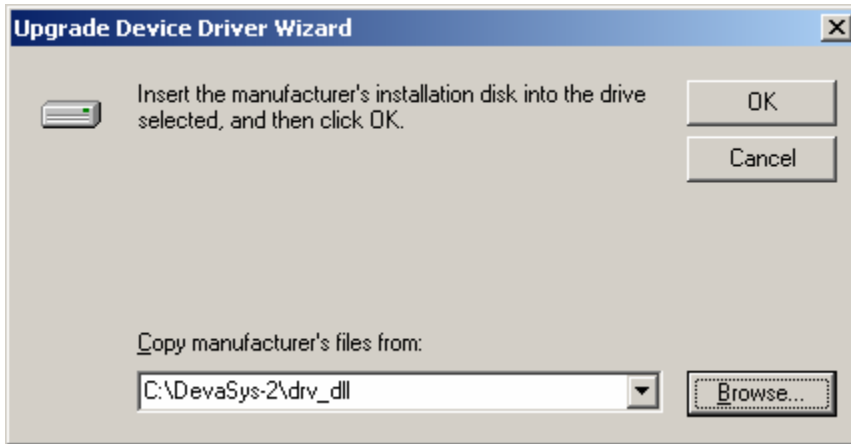


Figure 8 – Locate the NGS Driver

8. Click *OK*



Figure 9 – Path to NGS.INF is Selected.

9. The browse dialog will close. The next wizard page will indicate that an existing driver has been found (“c:\winnt\inf\oem3.inf” in **Figure 10**). Ensure that *Install one of the other drivers* is checked, then click Next>.

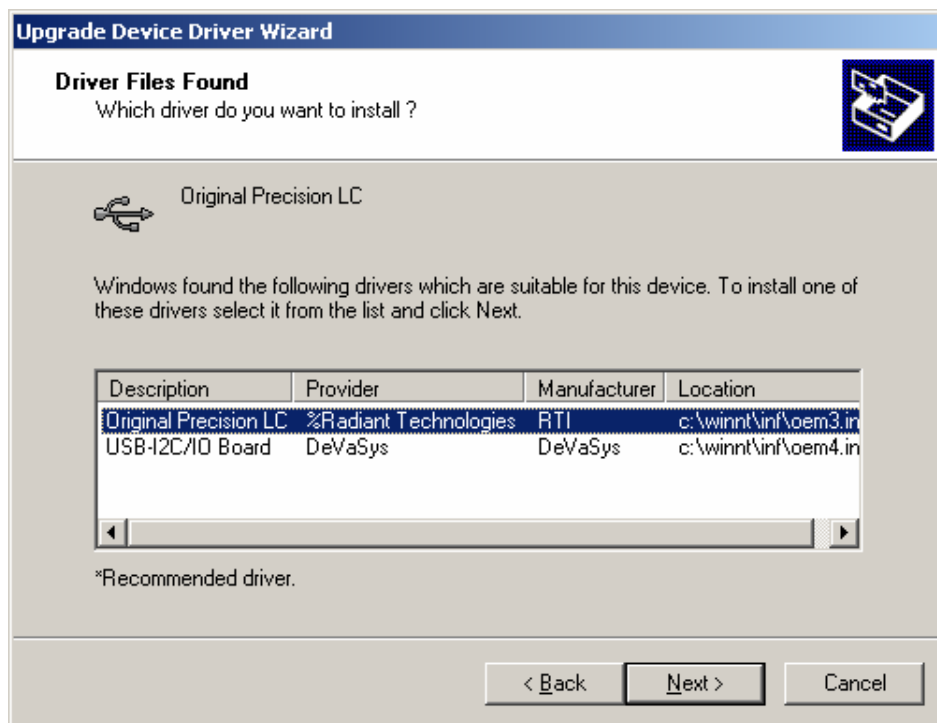


Figure 10 – Driver Override Wizard Page.

10. In the next wizard panel, select “Original Precision LC”, then click *Next*>

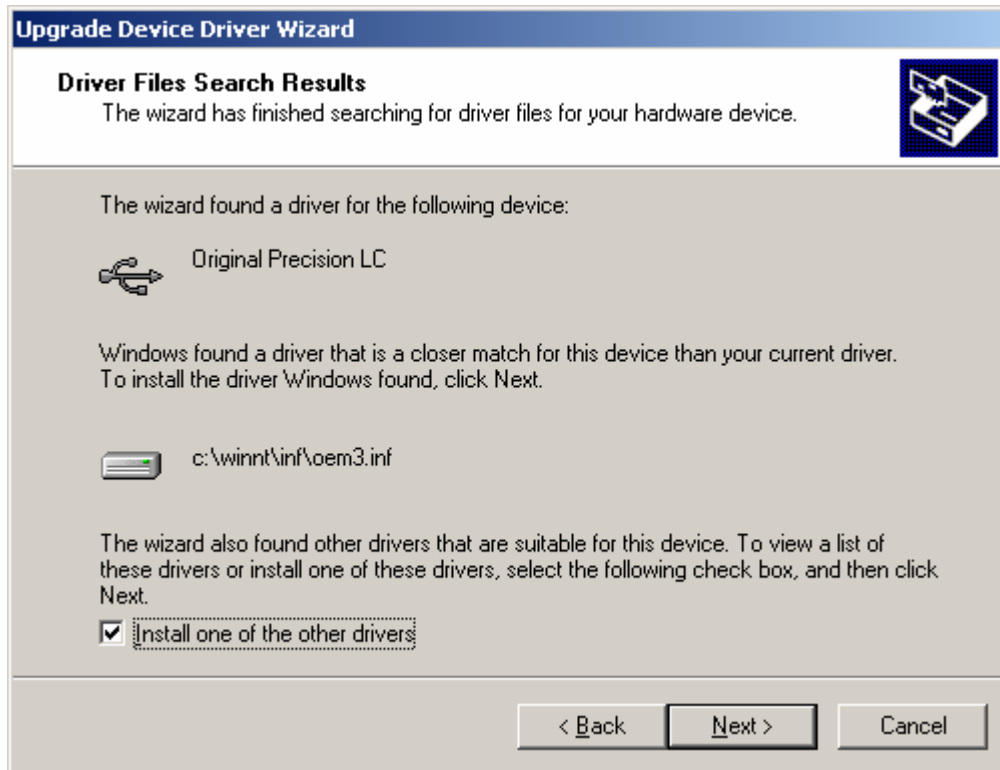


Figure 11 – Choose the “Original Precision LC” Driver.

11. Click *Finish* in the last Wizard panel. For Windows 2000, reboot.
12. Go to Start->Search->For Files or Folders... In *Search for file or folders named:* type “oem*.inf”. In *Containing text:* type “DeVaSys”. Drop down the *Look In:* tab and select “Browse...”. Navigate to c:\winnt\inf for Windows 2000 or c:\windows\inf for Windows XP or Vista. Conduct the search.
13. Two files should be found. Double-click the first to open it, then search for “radiant” in the file. If “radiant” is not found, that file name should be recorded. If “radiant” is found, double-click the second file and ensure “radiant” is not found. If it is not found, record that file name.
14. Go to C:\winnt\inf (Windows 2000) or c:\windows\inf (XP/Vista) and delete the files oemx.inf and oemx.pnf, where oemx is the root name of the file that you recorded in step 13.
15. Start Vision. Note that green light should start flashing. This is normal under Vision 3.2.0 or later. The hardware identifying and selection dialog will indicate *Precision LC (X)*.

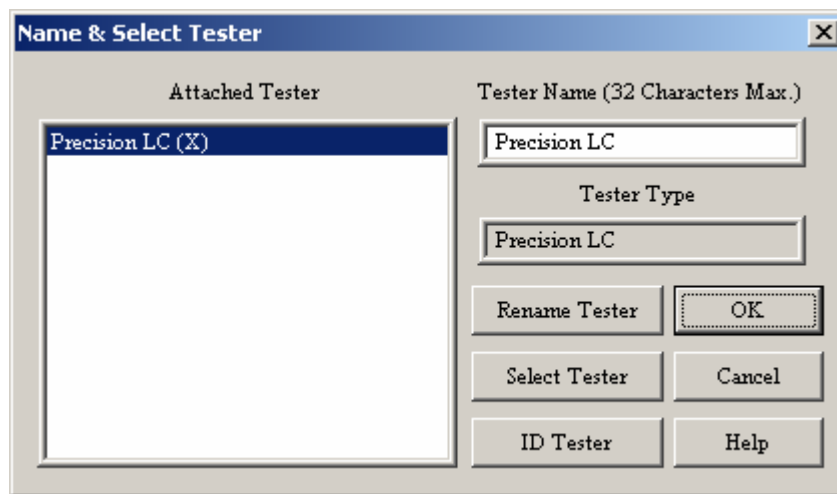


Figure 12 – Tester Selection Dialog with Precision LC Found and Selected.

16. Vision may not detect the tester in the first attempt. In that case, the green light will not start flashing and the hardware detection and selection dialog will indicate that no tester has been found as in **Figure 1**. In that case, either stop and then restart Vision or go to the Vision Tools->Hardware Refresh menu option. Either action will cause the green light to start flashing and the hardware selection dialog to indicate that the LC has been found (**Figure 12**).

Your Vision software and Precision LC hardware driver are now fully up-to-date. Visit the Radiant web site often at www.ferrodevices.com to check for Vision Task and hardware driver updates. Please let me know immediately if you have questions, comments or difficulties. Good luck in your testing.

Sincerely,

Scott P. Chapman
Computer Engineer